

## Species of Greatest Conservation Need

(SGCN) are a subset of all Kansas wildlife that include species with low or declining populations as well as species that are indicative of the diversity and health of Kansas' wildlife. Below are a few of the SGCN that can be found in this EFA.

Baltimore Oriole  
Dickcissel  
Eastern Meadowlark  
Lark Sparrow  
Northern Bobwhite  
Red-headed Woodpecker  
Scissor-tailed Flycatcher  
Yellow-throated Warbler  
Eastern Newt  
Green Frog  
Longtail Salamander  
Spring Peeper  
Monarch  
Gray Fox  
Southern Flying Squirrel  
Coal Skink  
Rough Earthsnake  
Northern Map Turtle



Scissor-tailed Flycatcher



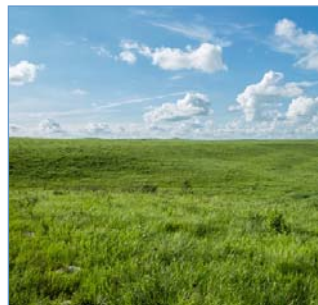
Long-tail Salamander

# Ozark Plateau

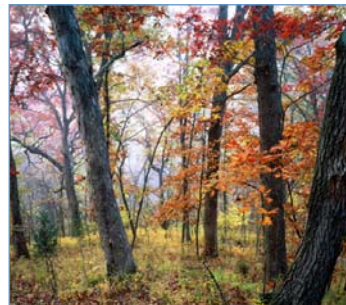


**Ecological Focus Areas (EFA)** represent landscapes identified within the Kansas' Wildlife Action Plan where conservation actions can be applied for maximum benefit to all Kansas wildlife. Each EFA includes a suite of Species of Greatest Conservation Need (SGCN), priority habitats and a set of conservation actions designed to address the specific resource concerns facing these species and habitats. The design of EFAs was based primarily on priority native habitats and refined using SGCN locations, and was built upon other planning efforts that address conservation priorities in the state.

**Kansas Priority Habitats** were prioritized based on their dominance and importance to the conservation of SGCN. Priority habitats that occur in the Ozark Plateau EFA are Tallgrass Prairie, Herbaceous Wetlands, Deciduous Forest, and Deciduous Floodplain habitat.



Tallgrass Prairie



Deciduous Forest



Herbaceous Wetlands

USDA conservation programs have the potential to address conservation needs of priority species and habitats identified in the State Wildlife Action Plan. The table below illustrates the connection between conservation issues identified in the Kansas State Wildlife Action Plan with Kansas' NRCS EQIP Priority Resource Concerns. Examples of NRCS Conservation Practices which Ozark Plateau EFA can be found in the SWAP at: <http://ksoutdoors.com/Services/Kansas-SWAP> Additional information on technical and financial assistance available to benefit wildlife can be found at: <http://ksoutdoors.com/Services/Private-Landowner-Assistance>

## Conservation Issues and Actions to Address Resource Concerns.

NRCS Resource Concerns	SWAP Conservation Issues	Potential NRCS Conservation Practices*
Degraded Plant Condition— Excessive Plant Pest Pressure	Invasive plant species pose a serious threat to the biodiversity through competitive interaction with native species	Upland Wildlife Habitat Management (645), Brush Mgmt. (314), Herbaceous Weed Control (315), Prescribed Burning (338), Prescribed Grazing (528)

\*Conservation practices are not all-inclusive, other eligible practices may apply.