

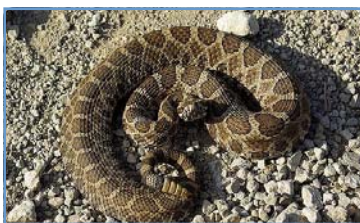
## Species of Greatest Conservation Need

(SGCN) are a subset of all Kansas wildlife that include species with low or declining populations as well as species that are indicative of the diversity and health of Kansas' wildlife. Below are a few of the SGCN that can be found in this EFA.

American Golden-Plover  
Black-necked Stilt  
Dickcissel  
Eared Grebe  
Grasshopper Sparrow  
Least Bittern  
Long-billed Curlew  
Northern Pintail  
Peregrine Falcon  
Piping Plover  
Semipalmated Sandpiper  
Wilson's Phalarope  
Whooping Crane  
Monarch  
Regal Fritillary  
Southern Bog Lemming  
Massasauga  
Plains Hog-nosed Snake



Whooping Crane



Massasauga

# Quivira



**Ecological Focus Areas (EFA)** represent landscapes identified within the Kansas' Wildlife Action Plan where conservation actions can be applied for maximum benefit to all Kansas wildlife. Each EFA includes a suite of Species of Greatest Conservation Need (SGCN), priority habitats and a set of conservation actions designed to address the specific resource concerns facing these species and habitats. The design of EFAs was based primarily on priority native habitats and refined using SGCN locations, and was built upon other planning efforts that address conservation priorities in the state.

**Kansas Priority Habitats** were prioritized based on their dominance and importance to the conservation of SGCN. Priority habitats that occur in the Quivira EFA are Mixed Grass Prairie, Sand Prairie, Herbaceous Wetlands, and Seeps and Springs.



Mixed Grass Prairie



Sand Prairie



Herbaceous Wetlands

USDA conservation programs have the potential to address conservation needs of priority species and habitats identified in the State Wildlife Action Plan. The table below illustrates the connection between conservation issues identified in the Kansas State Wildlife Action Plan with Kansas' NRCS EQIP Priority Resource Concerns. Examples of NRCS Conservation Practices which can be applied to address these conservation issues are also provided. The full lists of conservation issues for the Quivira EFA can be found in the SWAP at: <http://ksoutdoors.com/Services/Kansas-SWAP> Additional information on technical and financial assistance available to benefit wildlife can be found at: <http://ksoutdoors.com/Services/Private-Landowner-Assistance>

## Conservation Issues and Actions to Address Resource Concerns.

NRCS Resource Concerns	SWAP Conservation Issues	Potential NRCS Conservation Practices*
Inadequate Habitat for Fish and Wildlife - Habitat Degradation	Some herbaceous wetlands are being or have been drained and converted	Wetland Wildlife Habitat Mgmt. (644), Shallow Water Development & Mgmt. (646), Access Control (472), Wetland Restoration/Creation (657 & 658), Range Planting (550)
Degraded Plant Condition— Excessive Plant Pest Pressure	Invasive woody and herbaceous species (Phragmites, cattail, etc.) compete with native flora and modify habitat structure and function for fauna	Wetland Wildlife Habitat Mgmt. (644), Upland Wildlife Habitat Mgmt. (645), Brush Mgmt. (314), Herbaceous Weed Control (315), Wetland Restoration (657)

\*Conservation practices are not all-inclusive, other eligible practices may apply.